



Process Advanced Filtration Division  
 2340 Eastman Avenue  
 Oxnard, CA 93030  
 Phone (805) 604-3400  
 Fax (805) 604-3401

## EP8040-BS14-H8 UF Membrane

### Description

PVDF Spiral membrane  
 FRP outer wrap  
 One end seal - ATDs both ends

### Dimensions

Diameter **(A)** 7.90" (201 mm)  
 Overall Body Length **(B)** 40.0" (1016 mm)  
 Permeate Tube ID 1.138" (28.9 mm)  
 Membrane Area 332 ft<sup>2</sup> (27.0m<sup>2</sup>)  
 Weight 42 lb (19.1kg)

### Recommended Operating Parameters

Feed 65 - 80 gpm (246-303 lpm)  
 Inlet Pressure 40-65 psig (2.7-4.41bar)  
 Outlet Pressure 15-40 psig (1.0-2.7 bar)  
 Delta Pressure 25 -35 psig (1.7-2.4 bar)  
 Max Temperature 120°F (49°C)  
 Max pH Range 2-11 operating  
 2-12 cleaning

### Permeate Flow on Fresh Lab Paint Baths

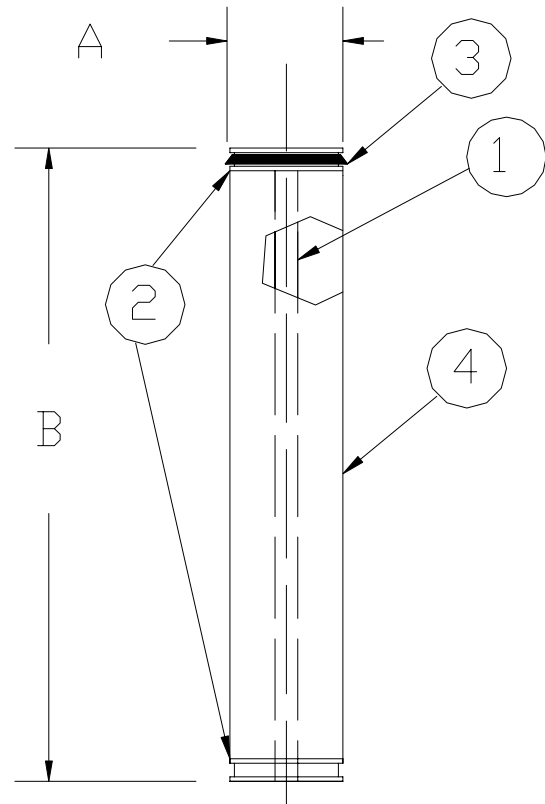
2.8 to 4.5 gpm (10.6 – 17.0 lpm)

### Housing

Osmonics 815T Housing

Rev 5/6/09

## Engineered for Electrocoat Applications



Item	Description
1	Permeate Tube
2	ATD/Seal Carriers
3	Brine Seal (P/N BS-80)
4	Membrane Body

